

What is the FlexTools Advanced Security Module?

The Advanced Security Module works with SpoolFlex and FormFlex, and enhances these FlexTools software security with the following features:

- Enhances distribution security by enabling encryption and password-protection of PDF files generated in SpoolFlex
- Provides multi-level security by allowing administrators to restrict user access to each FlexTools menu by user profile
- Restrict users to only the FlexTool menu options management wants them to have access to
- Encrypt and password protect PDF's interactively from the Manage Spooled Files or with automated distributions
- Remove command line access from FlexTool menus for any users you want to restrict access

Advanced Security Module Software Overview:

Advanced Security allows you to password protect and encrypt PDF files manually, or with automated distribution. Here is an example of manually password protecting and encrypting a PDF file using SpoolFlex. When manually emailing from Manage Spooled Files, select F8 for more options:

```

9/12/12          SpoolFlex          S10B064C
14:56:13        Send e-Mail         EHLPMP2A

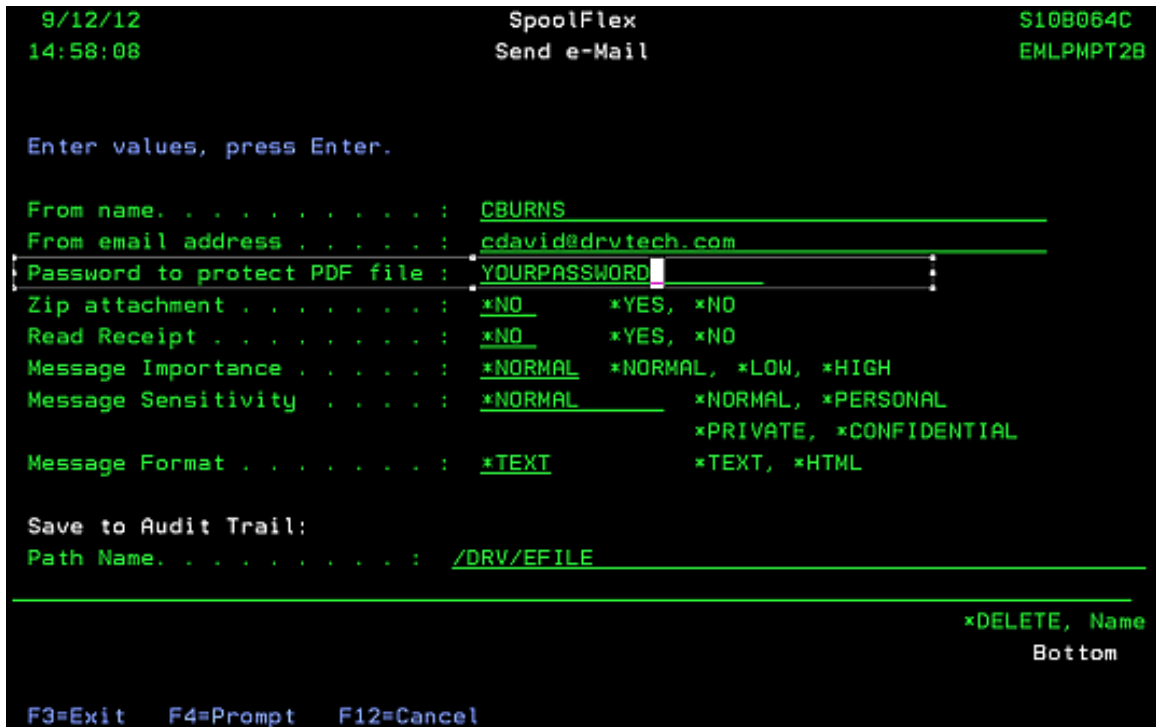
Spooled file Name/Number . . . : PRT0008      000008
Job Name/User/Number . . . . : CBURNS        CBURNS2      034292

Enter values, press Enter.

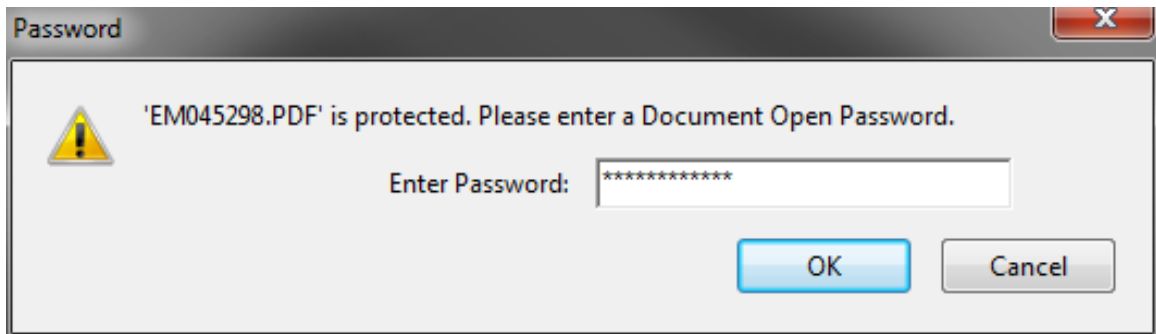
Email address  david@drvtech.com
Email subject  Report delivery from SpoolFlex
Email message

Output def name _____ Name...
Attachment name EN045298.PDF
                (overrides name from output def if both specified)  More...
F1=Help      F3=Exit      F4=Prompt
F8=More options  F12=Cancel
(C) COPYRIGHT DRV TECHNOLOGIES INC. 2008.
  
```

Next specify the password for the protected PDF:

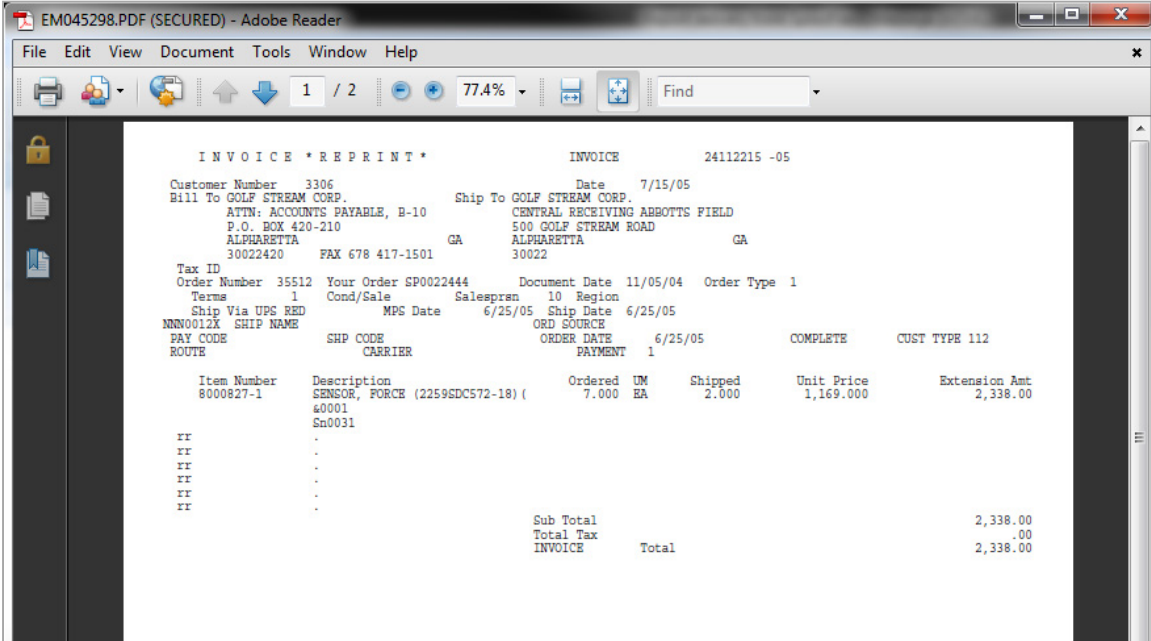


When you hit enter, the spooled file will be converted to an encrypted password protected PDF and emailed to the recipient you specified. The recipient will be prompted for the password that you specified:



Note: the Advanced Security Module requires Java Virtual Machine running on your system

No decryption software is required, just the correct password, to open the PDF.



You can also automate password encryption in a report distribution creating unique passwords for each recipient on the fly, or pull pre-established passwords from a SpoolFlex address book. Here is a sample of a report distribution set up to burst and email password protected PDF's to multiple recipients, with uniquely generated passwords:

```

9/12/12                               SpoolFlex                               $108064C
15:07:36                               Work with Report Distribution           SFL01C

                                           Position to _____

Type options, press Enter.
  2=Edit   3=Copy   4=Delete   5=Display   7=Rename   D=Distribute

Opt  Report Distribution  Description
  2  - DEMO EML W PW PRDT  Email Password Protected PDF
  -   - DEMO EML XL ATTCH  Burst and Email Excel Attachment
  -   - DEMO EML XL ATTCH2 Email Complete Report as Excel Attachment
  -   - DEMO EML XL NOTIFY Burst Sales Rpt Archive XL with EML Notification
  -   - DEMO INV EMAIL &AT EMAIL INVOICES + ARCHIVE + INDEX IN AUDIT TRAIL
  
```

This sequence will burst and email the report:

```

9/12/12                               SpoolFlex                               S10B064C
15:10:18                               Work with Report Distribution          SFL12C

Report Dist. - DEMO EML W PW PROT

Type options, press Enter.
  2=Edit  3=Copy  4=Delete  5=Display
          Delivery
Opt  Seq#  Type  Method  Description
  1  00020 SELPG *EML  Email Complete Report as Password Protected PDF
  
```

Here is where you specify whether to password protect or not. This feature will not work unless Advanced Security Module is activated:

```

9/12/12                               SpoolFlex                               S10B064C
15:12:03                               Work with Report Distribution          DELSELEM
                                          Deliver Select Pages via Email

Type choices, press Enter.              - DEMO EML W PW PROT / 00020

Retrieve Email Address from:
Address Book . . . . . AA SALES          Name...
Retrieve Addr Book Entry using:
Spool Data Map. . . (SDM Name). . . AA SALES          Name...
and Addr Book Entry (SDF Name). . . SALESMAN         Name...
Action when SDF retrieves blanks. *EXCEPT          *EXCEPT, *PREVIOUS, *USE
Additional Output Options:
Password Protect PDF file . . . . *YES                *YES, *NO
Output Definition . . . . . - SALES PDF W LTRHD2 *DFTPDF, Name...
Zip attached file before Email. . *NO                 *YES, *NO
Save Copy to Audit Trail:
Path Name . . . . . /DRV/SALES          Name, *DELETE
or
Audit Trail Index Definition. . . . . Name...
  
```

The password can be a constant, or a combination of variable fields, or stored in a SpoolFlex address book:

```

9/12/12                               SpoolFlex                               S10B064C
15:13:46                               Work with Report Distribution           PDFPSWRD
                                         Add PDF Password Protection

Type choices, press Enter.              - DEMO EML W PW PROT / 00020

PDF Password Generation:
Constant value for password . . .      *NONE                               Value
or
Using User Id . . . . .                _____                          &SPLUSR, &JOBUSR...
and Retrieve From . . . . .           _____                          *USRDFLT, *ADDRBK
Address Book Name . . . . .           _____                          *SAME, Name...
or
Using Spool Data (Spool Data Map)      AA SALES                             Name...
and Prefix . . . . .                  DRV                                   Value
and Spool Data Field (SDF) . . .      SALESMAN                             Name...
and Suffix . . . . .                  _____                          Value
or
Retrieve from Addr BK with Eml Addr    _____                          *YES, *NO
  
```

The password can even have an administrator’s “back door” in case the user forgets their password. In addition to password protecting PDF’s Advanced Security enables administrators to restrict FlexTool menu access by user profile. This menu is password protected for admins only.

Advanced Security also allows you to control how Users can use FlexTools by giving you the ability to restrict each API by user profile.

User profiles can be controlled with a *DEFAULT setting and then adding specific User Profiles that you allow to have “Exceptions” to those default settings.

```

1/22/16                               SpoolFlex                               S10B064C
17:16:43                               Work with User Defaults                 SFL01C

                                         Position to _____

Type options, press Enter.
  2=Edit  3=Copy  4=Delete  5=Display  7=Rename

Opt  User Profile  Name
-   *DEFAULT      Default User
-   ANNA          Anna Kozody
=   CBURNS        CBURNS
_   RYAN          RICHARD
  
```

FastFacts: Advanced Security Module

When you look in the user profile you will see the usual options to control which spooled files and output queues the user can access. This is part of the base product – not Advanced Security.

On the next menu screen you will come to the Advanced Security Add-On Screen to Manage Spooled File Restrictions:

```

1/22/16                               SpoolFlex                               S10B064C
17:26:46                               Work with User Defaults                 EDTDSPA1
                                         Advanced Security Add-On
Type choices, press Enter.              User: CBURNS

Manage Spooled Files Restrictions:
1=Send . . . . . *NO Y, N
2=Change . . . . . *NO Y, N
3=Hold . . . . . *NO Y, N
4=Delete . . . . . *NO Y, N
5=Display. . . . . *NO Y, N
6=Release. . . . . *NO Y, N
8=Attributes . . . . . *NO Y, N
9=Work with printing status. . . *NO Y, N
C=Copy/Convert . . . . . *NO Y, N
D=Distribute . . . . . *NO Y, N
E=Email. . . . . *NO Y, N
F=Fax. . . . . *NO Y, N
M=Move . . . . . *NO Y, N
P=Convert to PDF . . . . . *NO Y, N
R=Report Splitter. . . . . *NO Y, N
V=View . . . . . *NO Y, N
More . . .
F1=Online Help F3=Exit F12=Cancel
(C) COPYRIGHT DRV TECHNOLOGIES INC. 2008, 2015.

```

This applies to the Manage Spooled Files Option found in SpoolFlex and FormFlex. Some commands are IBM Commands and some are SpoolFlex commands, and you can toggle on or off for each profile you want to restrict.

The next menu screen lets you Control the Work with Output Definition Restrictions. Output Definitions are utilized by both SpoolFlex and FormFlex.

```

1/22/16                               SpoolFlex                               S10B064C
17:29:24                               Work with User Defaults                 EDTDSPA2
                                         Advanced Security Add-On
Type choices, press Enter.              User: CBURNS

Work with Output Def Restrictions:
Option 2=Edit. . . . .                *NO                                     Y, N
Option 3=Copy. . . . .                *NO                                     Y, N
Option 4=Delete. . . . .             *NO                                     Y, N
Option 5=Display . . . . .           *NO                                     Y, N
Option 7=Rename. . . . .             *NO                                     Y, N
Option 0=Change Owner. . . . .       *NO                                     Y, N
Function Key F6=Create . . . . .     *NO                                     Y, N
Function Key F11=View Toggle . . . . *NO                                     Y, N
All Access . . . . .                 *NO                                     Y, N
To Own . . . . .                    *NO                                     Y, N
3 Character Prefix . . . . .         _____ Characters
  
```

This allows you to control which users can create or change, or even see output definitions other than their own.

The next menu screen controls the Work with Forms Restrictions. This is for customers that have FormFlex electronic forms software.

```

1/22/16                               SpoolFlex                               S10B064C
17:32:56                               Work with User Defaults                 EDTDSPA3
                                         Advanced Security Add-On
Type choices, press Enter.              User: CBURNS

Work with Forms Restrictions:
Option 2=Edit. . . . .                *NO                                     Y, N
Option 3=Copy. . . . .                *NO                                     Y, N
Option 4=Delete. . . . .             *NO                                     Y, N
Option 5=Display . . . . .           *NO                                     Y, N
Option 6=Print . . . . .             *NO                                     Y, N
Option 7=Rename. . . . .             *NO                                     Y, N
Option 9=View Form . . . . .         *NO                                     Y, N
Option 13=Edit Header. . . . .       *NO                                     Y, N
Option L=Lock. . . . .               *NO                                     Y, N
Option 0=Change Owner. . . . .       *NO                                     Y, N
Option U=Unlock. . . . .             *NO                                     Y, N
Function Key F6=Create . . . . .     *NO                                     Y, N
Function Key F11=View Toggle . . . . *NO                                     Y, N
All Access . . . . .                 *NO                                     Y, N
To Department. . . . .               *NO                                     Y, N
To Own . . . . .                    *NO                                     Y, N
3 Character Prefix . . . . .         _____ Characters
F1=Online Help   F3=Exit   F12=Cancel
(C) COPYRIGHT DRV TECHNOLOGIES INC. 2008, 2015.
  
```

You have similar control to restrict which users can create new forms, edit or copy forms, print or view forms.

Have questions? Give us a call at 678 417-1521 to arrange a Demonstration