

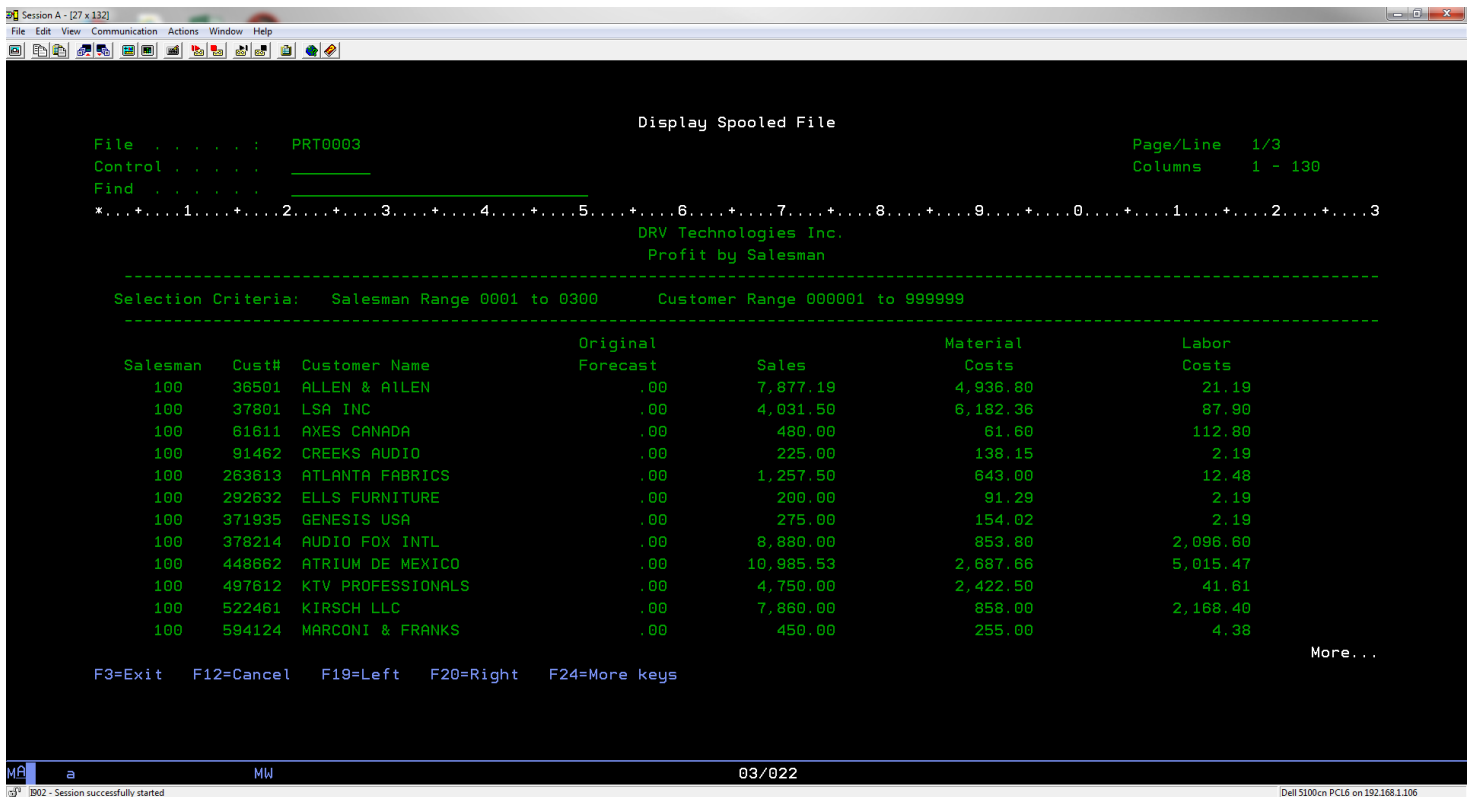


How to configure a 5250 display for 27 lines and 132 columns

Example display defined as 24 x 80:



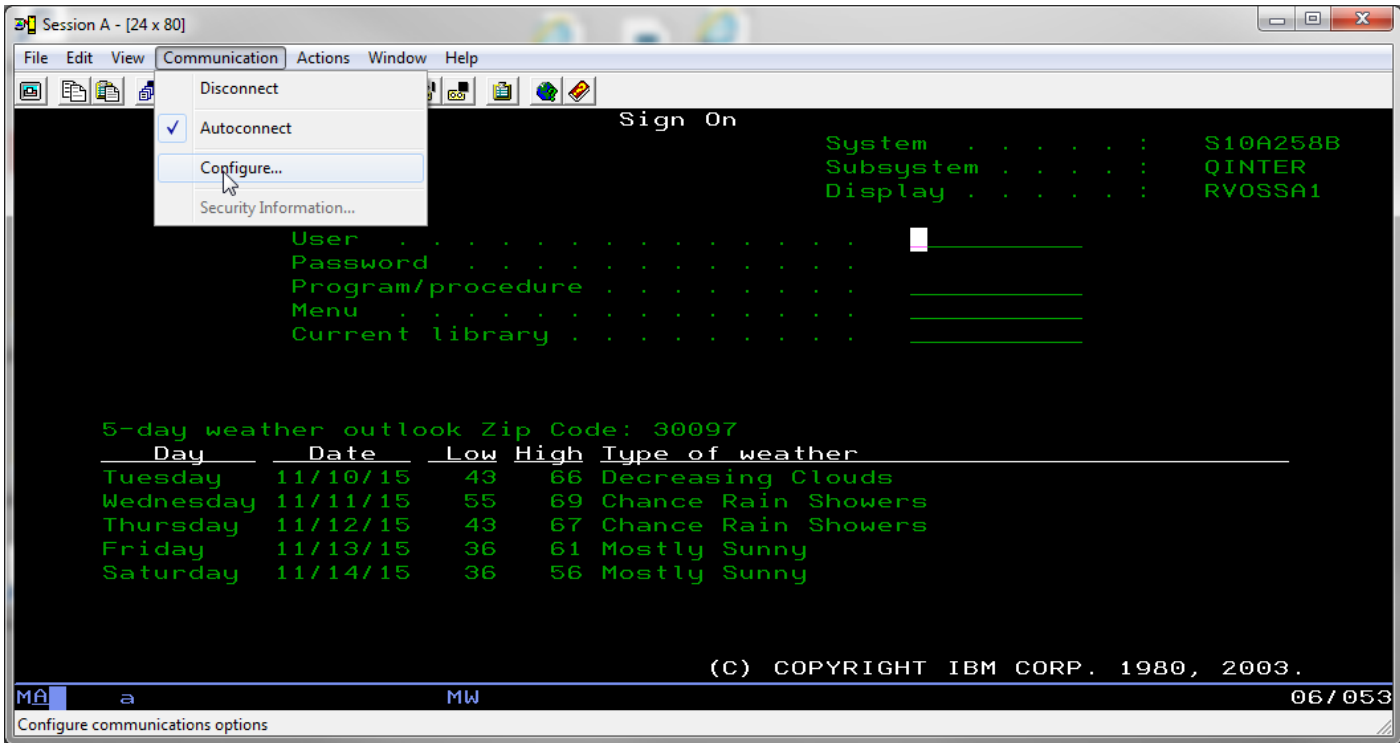
Example same display defined as 27 x 132



Configuring a display for 27 x 132 is very simple to do.

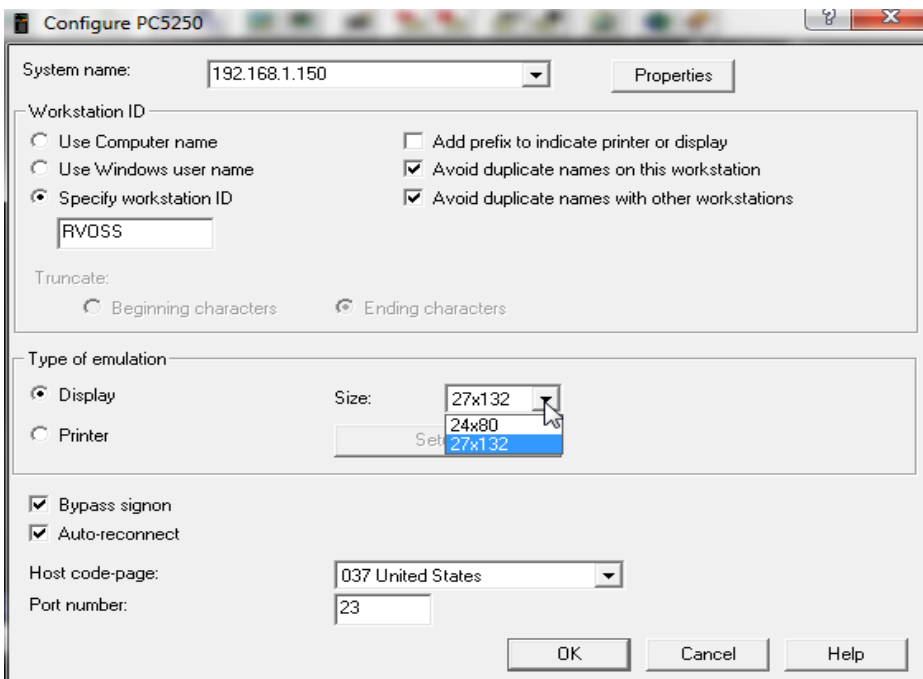
Step 1

On your Signon screen, select Communication>Configure

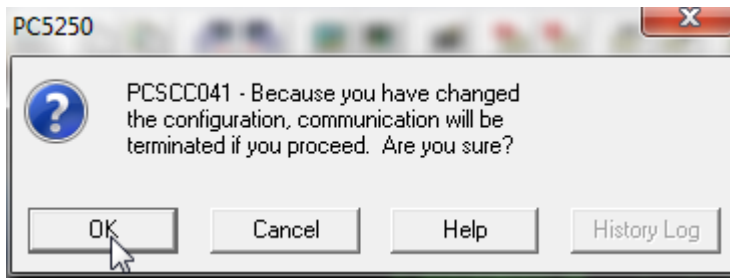


Step 2

Select Display Size = 27 x 132 then click OK



Note: You may get a message similar to this, click OK



Your display should go blank then redisplay with size of 27 x 132